



ALPHA  
WIND SERVICES

## WIND ENERGY EXPERTISE

---

Specialist technical personnel,  
integrated engineering, maintenance,  
repair and inspection services

Altrad Alpha Wind Services works with wind farm operators and Original Equipment Manufacturers (OEMs) during the installation and commissioning, and operations and maintenance stages, of offshore and onshore developments.

When we supply our specialist technical personnel our customers are assured they have the right expertise, where and when they need it. Delivery of our integrated services ensures the reliability and safety of critical equipment and operations.



# WHAT WE DO

---

## COMPETENT AND QUALIFIED PERSONNEL

**Our personnel arrive at any project with the right certification and full customer approved Personal Protective Equipment (PPE).**

All our technicians hold Global Wind Organisation (GWO) safety training standard certificates in:

- Sea survival
- Fire awareness
- Working at heights
- First aid advanced
- Manual handling.

We also have personnel trained in accordance with RenewableUK's Wind Turbine Safety Rules (WTSR) training standard where required. Additionally, we can train our personnel for any client specific requirements. The broad range of skilled personnel we utilise for individual work scopes through to large managed projects includes:

- Supervisors
- Installation and commissioning teams
- Technicians (mechanical / electrical hydraulic)
- Inspectors
- Structural, mechanical, electrical, hydraulic and reliability engineering consultants.

## ENGINEERING SUPPORT

**Our broad range of engineering expertise means we can support a wide variety of technical issues.**

Typical services include:

- Risk assessment and method statements
- Maintenance strategy development
- Major component replacement schemes
- Mechanical handling system design and manufacture
- Structural and fatigue analysis
- Failure Mode Effects Criticality Analysis (FMECA)
- Complex lift planning analysis.



## KEY ONSHORE PROJECTS

- Alinta
- Deerfield
- Black Oak
- Great Western
- Cappawhite
- Bingham
- Nikkarinkaarto
- Hunflen
- Lemkaer
- Kopsa.

## INSTALLATION AND COMMISSIONING SERVICES

**During the turbine installation and commissioning stages of a project our services and personnel ensure efficiency and safety.**

Services we supply include:

- Installation, commissioning, project and warehouse supervision
- Supply of installation teams (electrical / mechanical)
- Supply of quality inspectors for construction
- Lift planning and support services.

## MAINTENANCE, SERVICING AND REPAIR

**Ensuring the reliability of equipment throughout the life of a development is crucial to operational efficiency.**

Our range of services include:

- Supply of rope access blade and tower repair technicians
  - Supply of service technicians
  - Supply of main component exchange teams
  - Hydraulic services
  - Bolting and torquing services
  - Crane and mechanical system maintenance and repair
  - Structural and fabric maintenance
  - Supply of discipline specialists for fault finding activities.
-

### INSPECTION SERVICES

Our comprehensive range of inspection services allow us to deliver crucial data and analysis about the reliability of equipment. Our personnel are rope access qualified, allowing works to be carried out safely and efficiently.

Inspection services we offer includes:

- Supply of blade access inspectors
- Statutory inspection services
- Platform, nacelle and sub-station crane inspections
- Lifting equipment examinations
- Dropped Object Prevention Scheme (DROPS) surveys
- Non Destructive Testing (NDT) of structures, techniques include:
  - Close Visual Inspection (CVI)
  - Magnetic Particle Inspection (MPI)
  - Liquid Penetrant Inspection (LPI)
  - Ultrasonic Testing (UT)
  - Eddy Current Testing (ECT)
  - Alternating Current Field Measurement (ACFM)
  - Phased Array Inspection (PAUT)
- Corrosion analysis.

### BLADE INSPECTION AND REPAIRS

As specialists in blade inspection and repair our authorised fibre repair technicians carry out a variety of work scopes via rope access. The size of projects we work on varies from individual blade repairs to large turn-key repair projects and upgrade campaigns.

We carry out general scheduled inspection as well as specific blade inspections for damage caused by a variety of circumstances such as:

- Structural damage from lightning
- Shipping installation damage
- Structural cracking
- Leading and trailing edge erosion.

The repairs and upgrades we carry out include:

- Repair and maintenance of lightning protection systems
- Upgrades of leading edge protection system
- Retrofit and upgrade solutions (Vortex Generators, Serration etc)
- Implementation of new methods and procedures, including materials, Work Instructions (WI) and Risk Assessment and Method Statements (RAMS).

### EQUIPMENT SUPPLY

Through our parent company, Altrad Sparrows, we can supply specialist lifting and mechanical handling equipment.

Designed to minimise life cycle maintenance, their equipment is reliable and can be customised to meet individual customer requirements.

- Cranes
- Davits and hoists
- Overhead cranes
- Bespoke mechanical handling systems
- Cable / pipe handling systems.



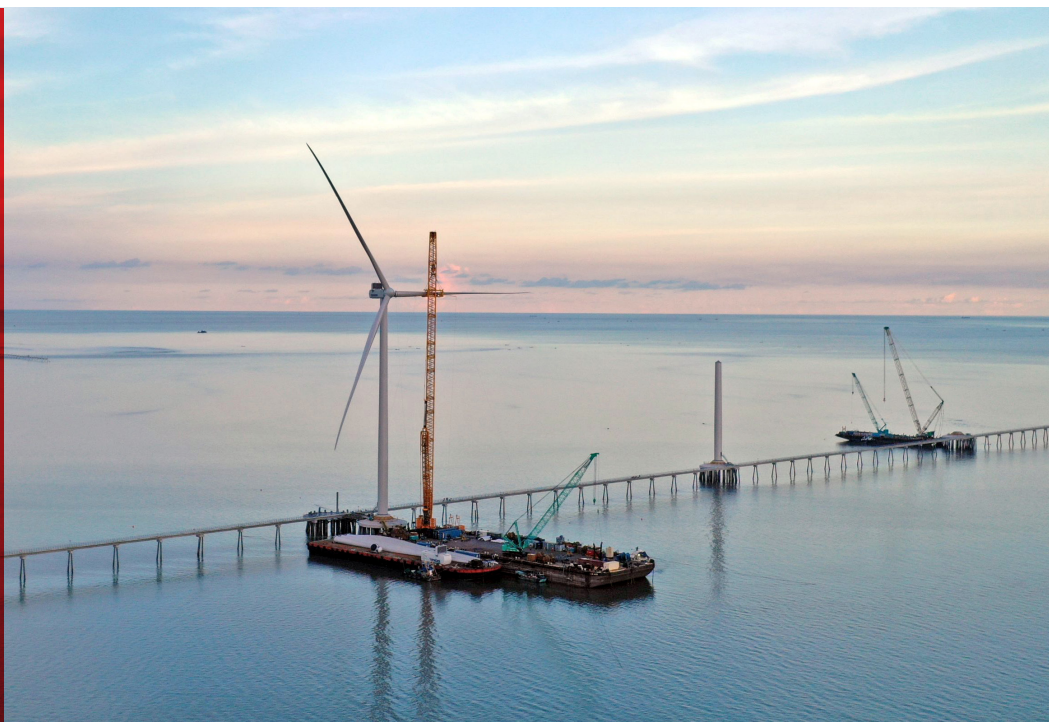
500+

wind farm projects globally in Europe, UK, USA, Japan and Australia.



### KEY OFFSHORE PROJECTS

- Barrow
- North Hoyle
- Scroby Sands
- Kentish Flats
- Thanet
- Robin Rigg
- OWEZ
- Q7
- Horns Rev 1
- Northwind.





# AN ALTRAD COMPANY


---

Altrad Alpha Wind Services is an Altrad Sparrows company, part of the Altrad Group, with a global network of technical and engineering expertise which can be deployed anywhere around the world.



 **Altrad Alpha Wind Services**  
**HEAD OFFICE**  
Farvervej 1  
7600 Struer  
Denmark

 Altrad Sparrows facilities.

 The Altrad Group has 200 active subsidiaries spread over 59 countries.

---

Altrad Alpha Wind Services is an Altrad Sparrows company, part of the Altrad Group.  
For more information please visit [www.altradalpha.com](http://www.altradalpha.com)

